

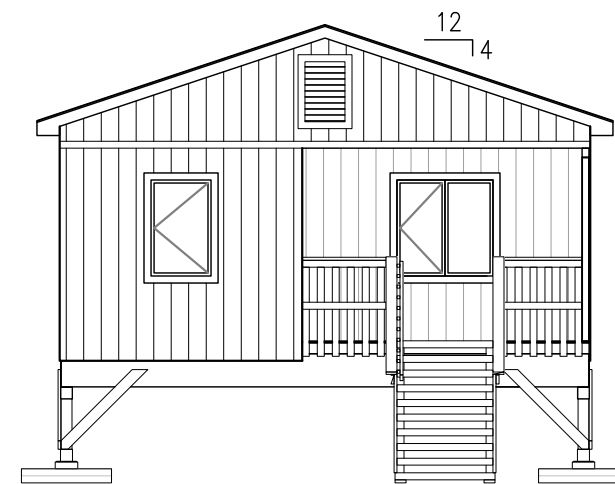
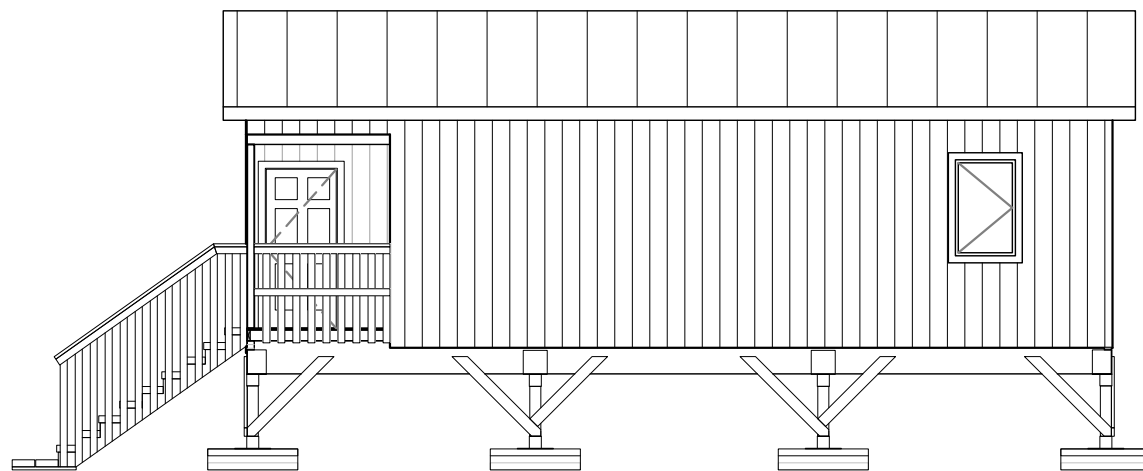
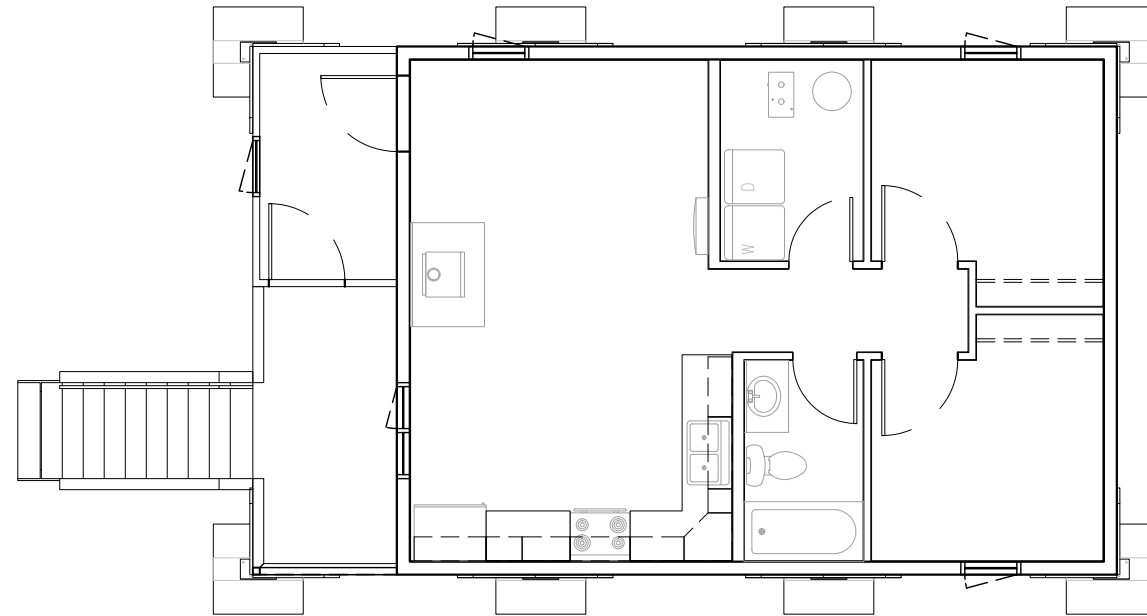
# ALASKA INSULATED PANELS

22'x36' - 2 BEDROOM, KIT #11

660 S.F. LIVING

60 S.F. UN-INSULATED ARCTIC ENTRY

72 S.F. DECK



**ALASKA  
INSULATED  
PANELS**  
PHONE: (907)357-2769  
FAX: (907)357-2770  
alaskainsulatedpanels.com

AIP Project Number  
?????

Project Name:  
ALASKA INSULATED PANELS  
22'X36' - 2 BEDROOM  
KIT #11

Revisions:	Date:

Drawing Title:  
PREVIEW  
  
Date:  
February 15, 2023  
Operator:  
LN

T001