

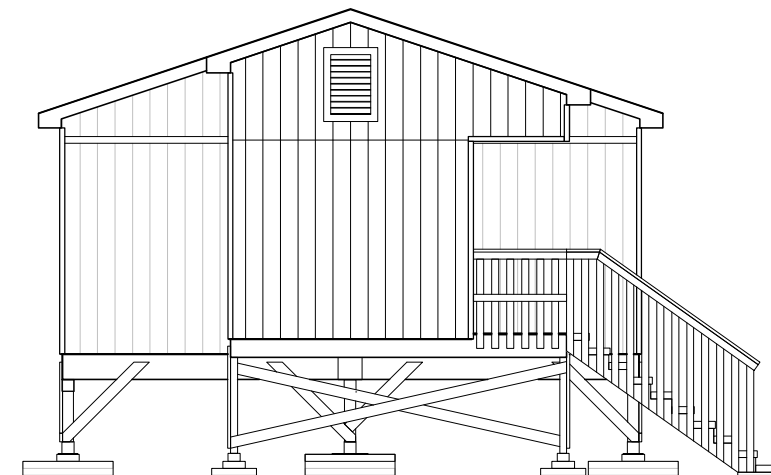
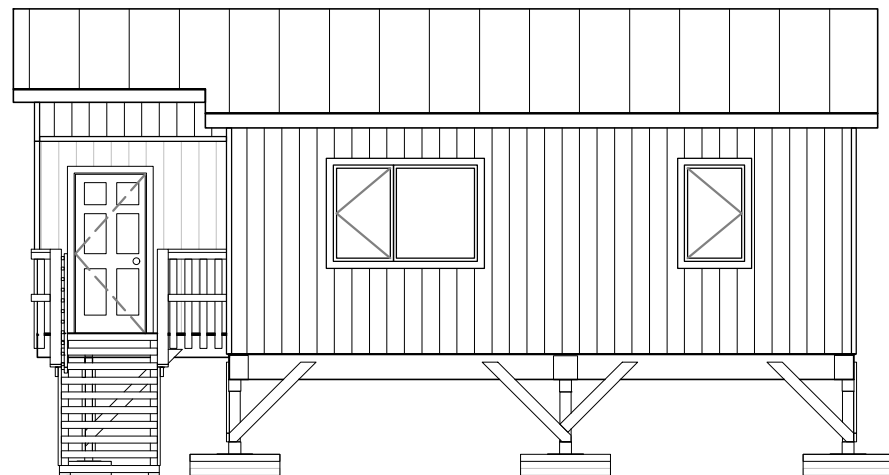
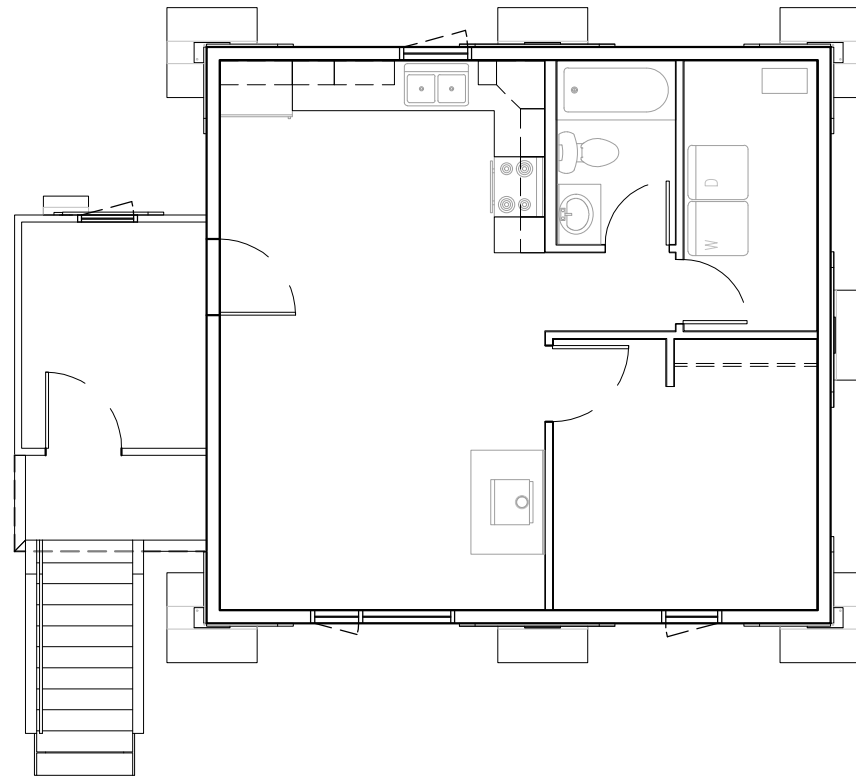
ALASKA INSULATED PANELS

24'x26' - 1-BEDROOM

624 S.F. LIVING

80 S.F. UN-INSULATED ARCTIC ENTRY

32 S.F. DECK



**ALASKA
INSULATED
PANELS**
PHONE: (907)357-2769
FAX: (907)357-2770
alaskainsulatedpanels.com

AIP Project Number
?????

Project Name:
ALASKA INSULATED PANELS
24X26 - 1 BEDROOM
KIT #1

Revisions:	Date:

Drawing Title:
PREVIEW
Date:
February 15, 2023
Operator:
LN

T001