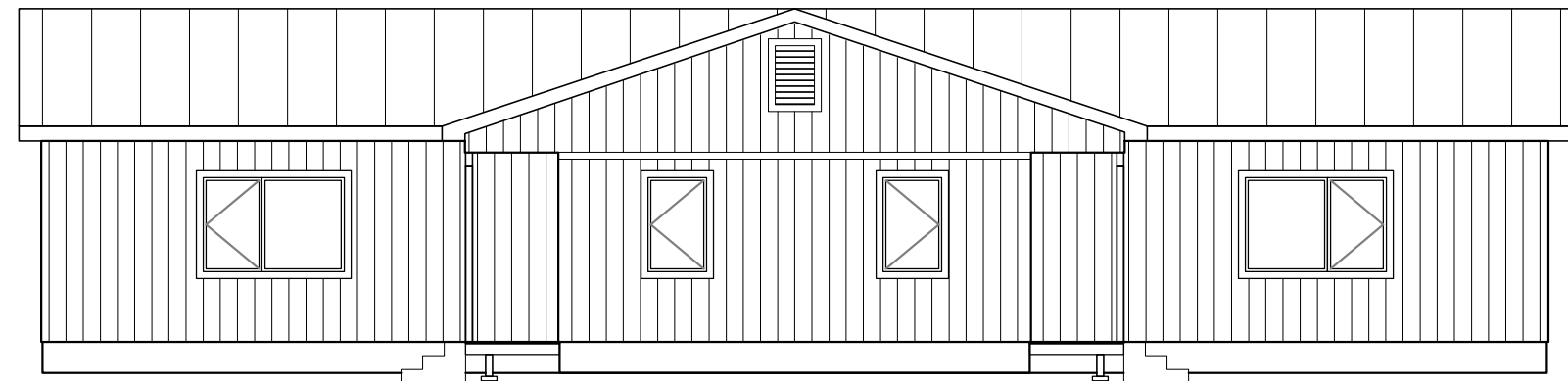
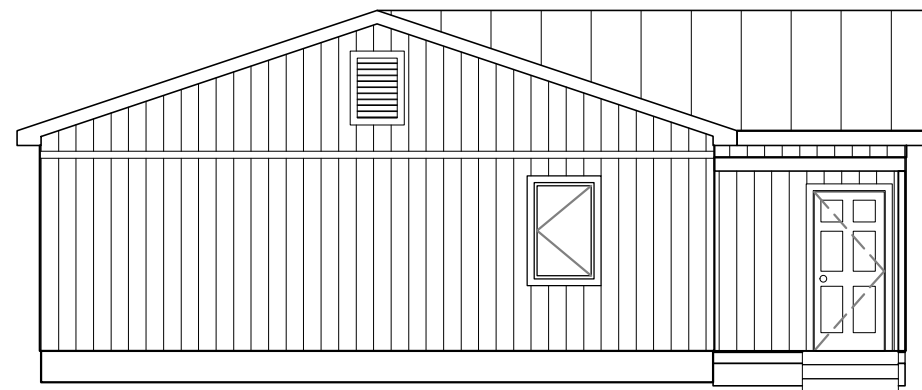
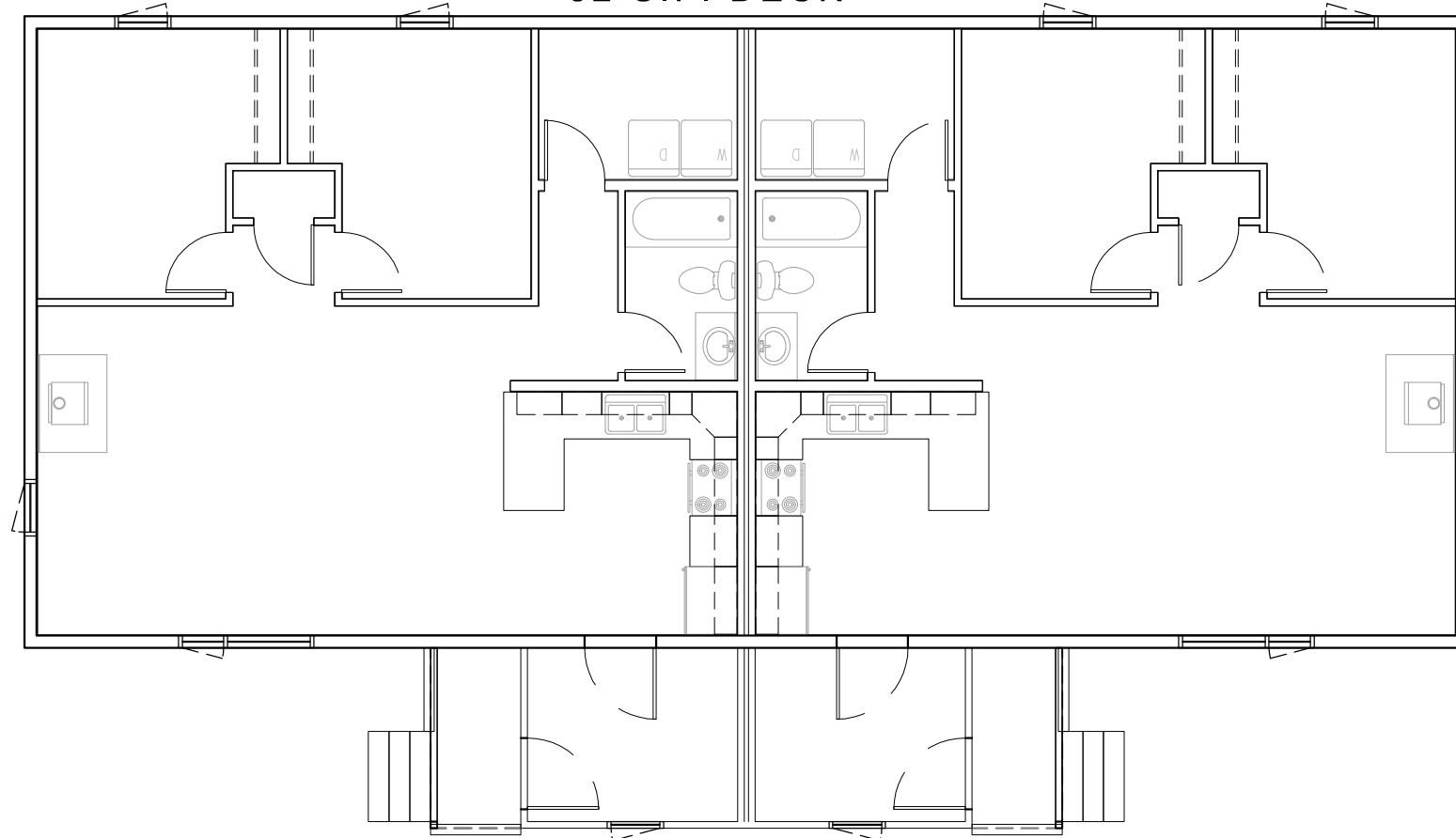


# ALASKA INSULATED PANELS

## 28'x64' - 2-BEDROOM DUPLEX , KIT #14

PER UNIT: 896 S.F. LIVING  
80 S.F. UN-INSULATED ARCTIC ENTRY  
32 S.F. DECK



**ALASKA  
INSULATED  
PANELS**  
PHONE: (907)357-2769  
FAX: (907)357-2770  
alaskainsulatedpanels.com

AIP Project Number  
?????

Project Name:  
ALASKA INSULATED PANELS  
28'X64' - 2 BEDROOM DUPLEX  
KIT #14

Revisions:	Date:

Drawing Title:  
PREVIEW

Date:  
April 17, 2024  
Operator:  
LN

T001