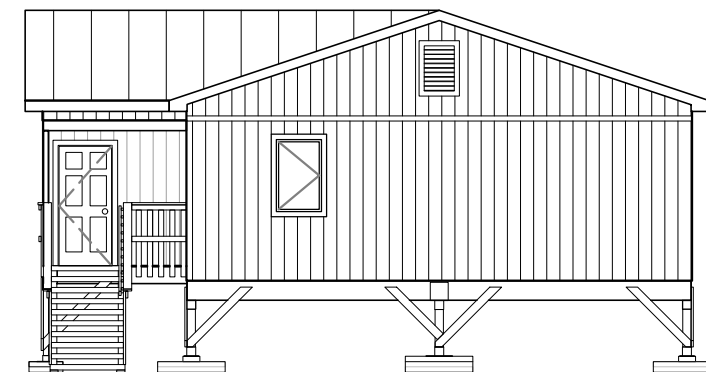
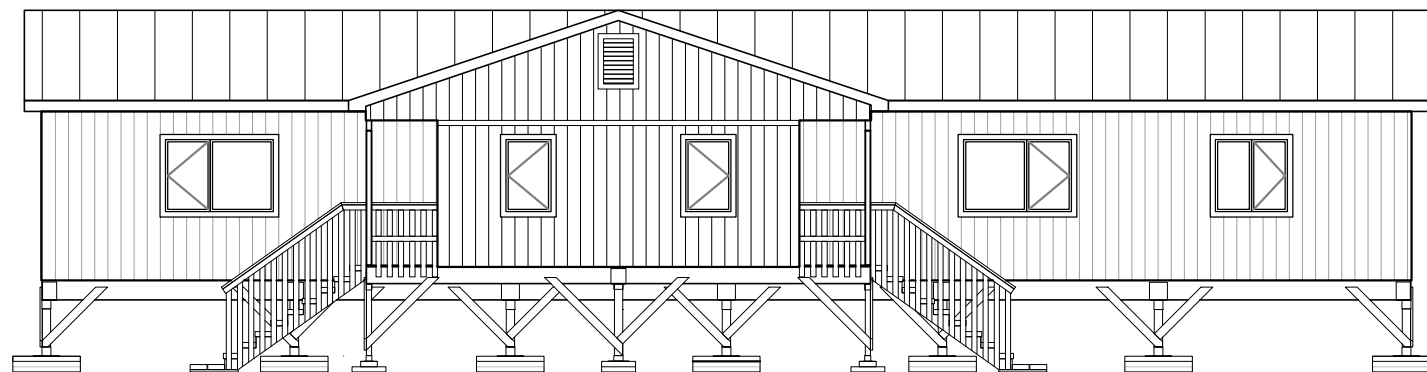
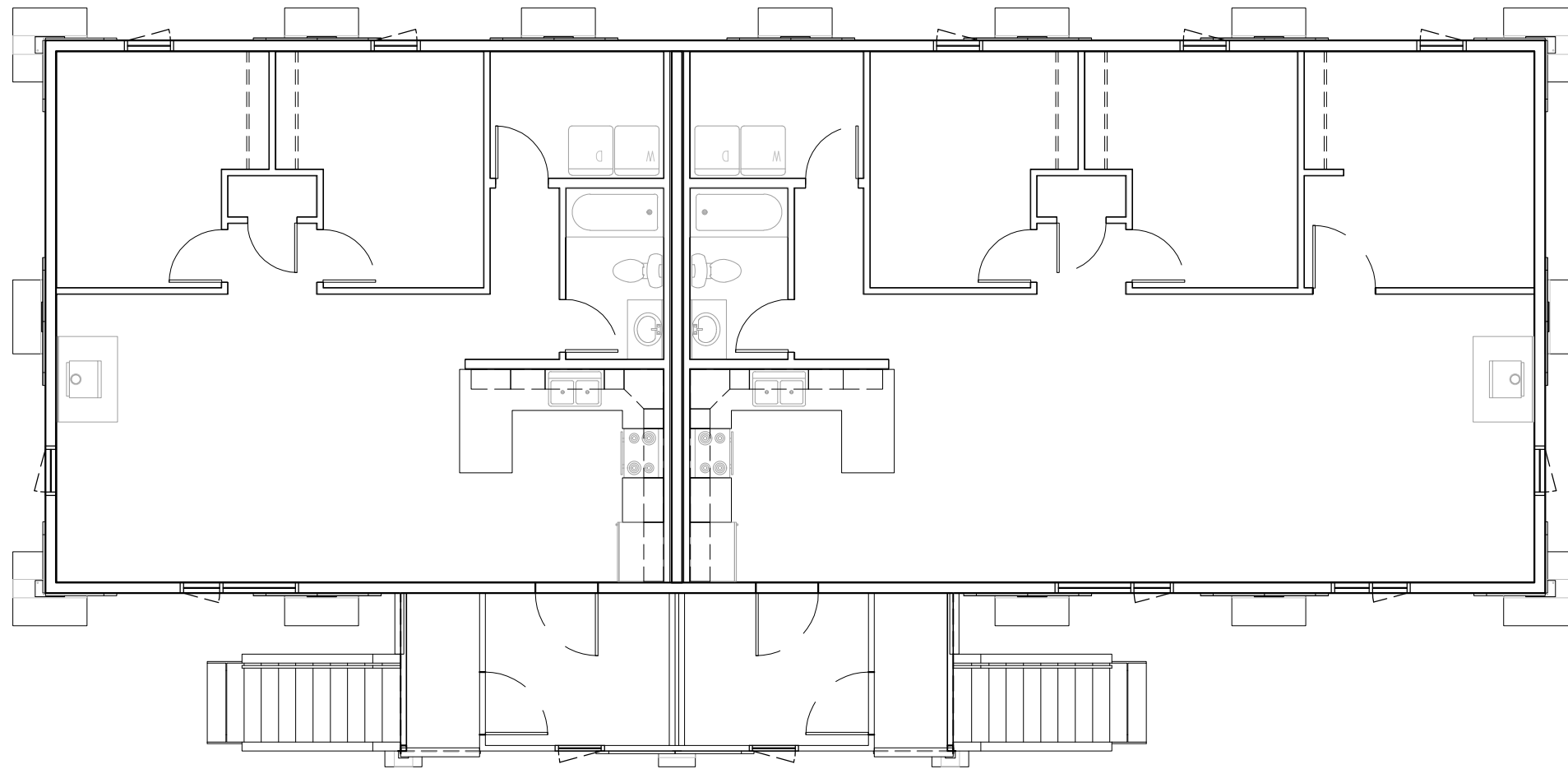


ALASKA INSULATED PANELS

28'x76' - 2&3 - BEDROOM DUPLEX. KIT #15

PER UNIT: 896 & 1,232 S.F. LIVING
80 S.F. UN-INSULATED ARCTIC ENTRY
32 S.F. DECK



**ALASKA
INSULATED
PANELS**
PHONE: (907)357-2769
FAX: (907)357-2770
alaskainsulatedpanels.com

AIP Project Number
?????

Project Name:
ALASKA INSULATED PANELS
28'X76' -2&3 BEDROOM DUPLEX
KIT #15

Revisions:	Date:

Drawing Title:
PREVIEW

Date:
April 17, 2024
Operator:
LN

T001